

MEGHALAYA BOARD OF SCHOOL EDUCATION
HIGHER SECONDARY SCHOOL LEAVING CERTIFICATE EXAMINATION, 2011
(SCIENCE STREAM)

ABSTRACT OF RESULTS

| Category | No of Candidates | | No of Candidates passed in | | | | | Total Pass | Percentage of Pass |
|--------------------|------------------|-------------|----------------------------|-----------------|----------------|-------------|-------------|-------------|--------------------|
| | Applied | Appeared | First Division | Second Division | Third Division | Simple Pass | Improvement | | |
| REGULAR | | | | | | | | | |
| Male | 1437 | 1393 | 302 | 563 | 47 | - | - | 912 | 65.47 |
| Female | 1352 | 1326 | 337 | 592 | 17 | - | - | 946 | 71.34 |
| Total | 2789 | 2719 | 639 | 1155 | 64 | - | - | 1858 | 68.33 |
| NON-REGULAR | | | | | | | | | |
| Male | 222 | 207 | 12 | 77 | 8 | 6 | 4 | 107 | 51.69 |
| Female | 134 | 132 | 6 | 65 | 2 | 3 | - | 76 | 57.58 |
| Total | 356 | 339 | 18 | 142 | 10 | 9 | 4 | 183 | 53.98 |
| Grand Total | 3145 | 3058 | 657 | 1297 | 74 | 9 | 4 | 2041 | 66.74 |

11



(G. G. Momin)
 Controller of Examinations,
 Meghalaya Board of School Education,
 Tura

Dated Tura,
 the 5th May, 2011

MEGHALAYA BOARD OF SCHOOL EDUCATION
HIGHER SECONDARY SCHOOL LEAVING CERTIFICATE EXAMINATION, 2011
(SCIENCE STREAM)

CATEGORYWISE / GENDERWISE PERCENTAGE OF PASS

| Category | Applied | Appeared | No of Candidates Passed | | | | | | Pass Percentage |
|----------|---------|----------|-------------------------|----------|----------|-------------|--------|-------|-----------------|
| | | | 1st Div. | 2nd Div. | 3rd Div. | Simple Pass | Imprv. | Total | |

Schedule Caste

| | | | | | | | | | |
|--------|----|----|---|---|-----|-----|-----|----|-------|
| Male | 23 | 22 | 3 | 8 | Nil | Nil | 1 | 12 | 54.55 |
| Female | 7 | 7 | 1 | 3 | 1 | Nil | Nil | 5 | 71.43 |

Schedule Tribe

| | | | | | | | | | |
|--------|------|------|-----|-----|----|---|-----|-----|-------|
| Male | 1327 | 1276 | 214 | 523 | 39 | 5 | 1 | 782 | 61.29 |
| Female | 1327 | 1301 | 291 | 600 | 12 | 2 | Nil | 905 | 69.56 |

OBC

| | | | | | | | | | |
|--------|----|----|---|----|---|-----|-----|----|-------|
| Male | 35 | 33 | 9 | 10 | 2 | Nil | 1 | 22 | 66.67 |
| Female | 20 | 20 | 2 | 10 | 1 | Nil | Nil | 13 | 65.00 |

General

| | | | | | | | | | |
|--------|-----|-----|----|----|----|---|-----|-----|-------|
| Male | 274 | 269 | 88 | 99 | 14 | 1 | 1 | 203 | 75.46 |
| Female | 132 | 130 | 49 | 44 | 5 | 1 | Nil | 99 | 76.15 |

| | | | | | | | | | |
|--------------------|-------------|-------------|------------|-------------|-----------|----------|----------|-------------|--------------|
| Grand Total | 3145 | 3058 | 657 | 1297 | 74 | 9 | 4 | 2041 | 66.74 |
|--------------------|-------------|-------------|------------|-------------|-----------|----------|----------|-------------|--------------|



(G. G. Momin)
Controller of Examinations,
Meghalaya Board of School Education,
Tura

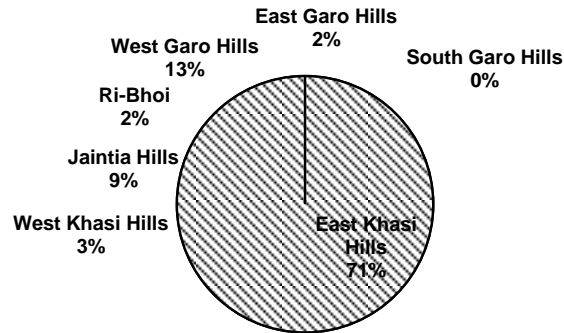
Dated Tura,
the 5th May, 2011

MEGHALAYA BOARD OF SCHOOL EDUCATION
HIGHER SECONDARY SCHOOL LEAVING CERTIFICATE EXAMINATION, 2011
(SCIENCE STREAM)

Districtwise Percentage of Pass

| Districts | No of Candidates | | Percentage of Pass |
|--------------------|------------------|-------------|--------------------|
| | Appeared | Passed | |
| East Khasi Hills | 2102 | 1451 | 69.03 |
| West Khasi Hills | 95 | 61 | 64.21 |
| Jaintia Hills | 286 | 188 | 65.73 |
| Ri-Bhoi | 66 | 36 | 54.55 |
| West Garo Hills | 430 | 270 | 62.79 |
| East Garo Hills | 79 | 35 | 44.30 |
| South Garo Hills | Nil | Nil | 0.00 |
| Grand Total | 3058 | 2041 | 66.74 |

Districtwise Pass Percentage of Total Passed



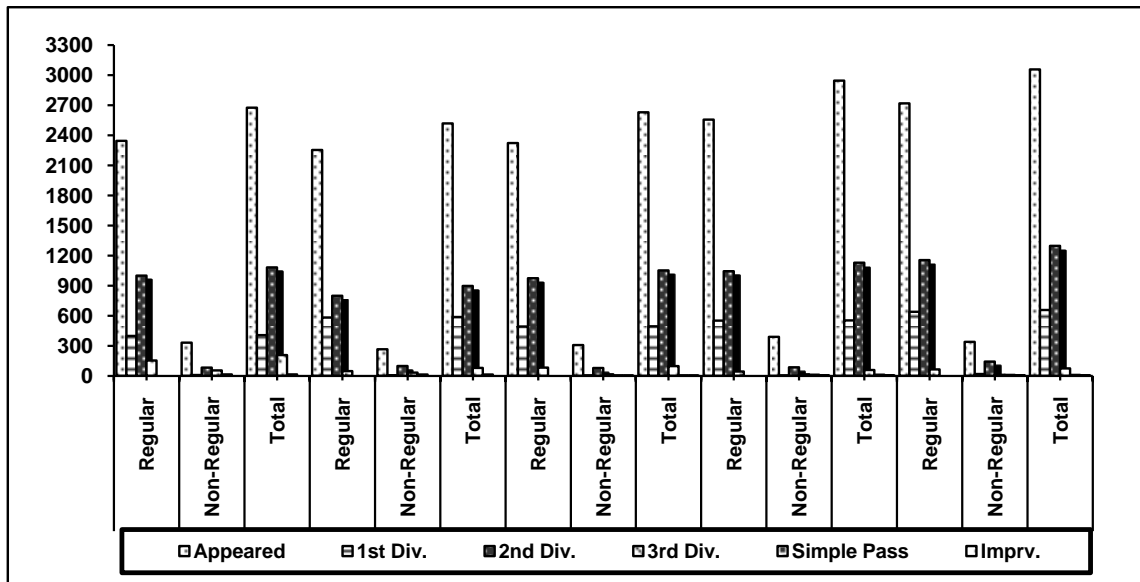
(G. G. Momin)
 Controller of Examinations,
 Meghalaya Board of School Education,
 Tura

Dated Tura,
 the 5th May, 2011

MEGHALAYA BOARD OF SCHOOL EDUCATION
HIGHER SECONDARY SCHOOL LEAVING CERTIFICATE EXAMINATION, 2011
(SCIENCE STREAM)

STATEMENT OF HSSLC EXAMINATION RESULTS FOR FIVE YEARS (2007-2011)

| Year of Examination | Category | Appeared | No of Candidates Passed | | | | | | Pass Percentage |
|---------------------|--------------|-------------|-------------------------|-------------|------------|-------------|----------|-------------|-----------------|
| | | | 1st Div. | 2nd Div. | 3rd Div. | Simple Pass | Imprv. | Total | |
| 2007 | Regular | 2345 | 398 | 1000 | 153 | 0 | 0 | 1551 | 66.14 |
| | Non-Regular | 331 | 8 | 82 | 54 | 14 | 0 | 158 | 47.73 |
| | Total | 2676 | 406 | 1082 | 207 | 14 | 0 | 1709 | 63.86 |
| 2008 | Regular | 2254 | 582 | 799 | 47 | 0 | 0 | 1428 | 63.35 |
| | Non-Regular | 265 | 5 | 98 | 32 | 13 | 0 | 148 | 55.85 |
| | Total | 2519 | 587 | 897 | 79 | 13 | 0 | 1576 | 62.56 |
| 2009 | Regular | 2323 | 492 | 974 | 82 | 0 | 0 | 1548 | 66.64 |
| | Non-Regular | 307 | 2 | 78 | 15 | 2 | 2 | 99 | 32.25 |
| | Total | 2630 | 494 | 1052 | 97 | 2 | 2 | 1647 | 62.62 |
| 2010 | Regular | 2557 | 551 | 1044 | 43 | 0 | 0 | 1638 | 64.06 |
| | Non-Regular | 389 | 2 | 85 | 15 | 11 | 4 | 117 | 30.08 |
| | Total | 2946 | 553 | 1129 | 58 | 11 | 4 | 1755 | 59.57 |
| 2011 | Regular | 2719 | 639 | 1155 | 64 | 0 | 0 | 1858 | 68.33 |
| | Non-Regular | 339 | 18 | 142 | 10 | 9 | 4 | 183 | 53.98 |
| | Total | 3058 | 657 | 1297 | 74 | 9 | 4 | 2041 | 66.74 |



(G. G. Momin)
 Controller of Examinations,
 Meghalaya Board of School Education,
 Tura

Dated Tura,
 the 5th May, 2011